

1t30m electric hydraulic telescopic boom marine crane for multi-purpose vessel

BRIEF INTRODUCTION

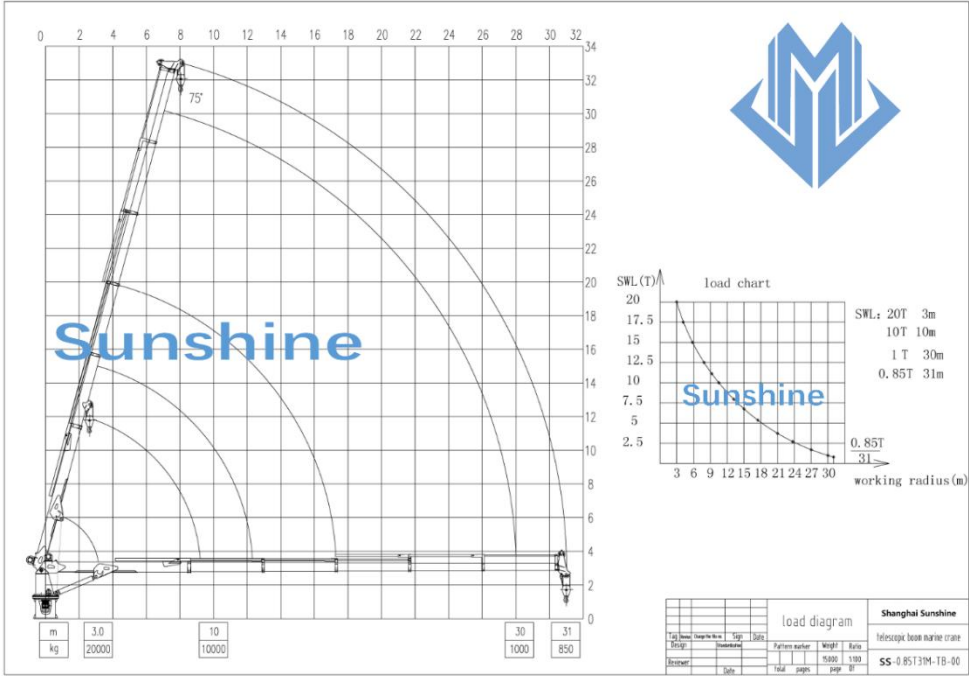
The telescopic box boom marine crane's jib consists of a box-welded steel construction and has been built-up from high quality steel plates. The jib has been provided with bracket to connect the hydraulic cylinder and support brackets to connect the jib to the crane housing. The jib has furthermore been provided with all necessary stiffeners, a winch support, lifting eyes, wire rope guidings and a double wire sheave housing at the outer end. Under normal circumstances the jib is supplied as a complete unit but dependent on the outreach of the crane, it may be possible that, for transportation reasons, the jib is supplied in two parts which afterwards must be bolted or welded together by the user.

Technical specification

1	SWL	1t@30m
2	Max working radius	30m
3	Min working radius	3m
4	Hoisting speed	0~12m/min
5	Slewing speed	0.6r/min
6	Slewing angle	360° free
7	Luffing time	70s
8	Hook travel	30m
9	DFT of painting	320um
10	Extension time	100s
11	Working condition	
	Heel	≤ 5°
	Trim	≤ 2°
12	Electric motor	
	Power	37Kw
	Speed	1480r/min
	Power source	440V 50Hz,
	Protect class	F
	Working type	S1
13	Flow	100L/min
14	Design temperature	-10°~40°

15	Dead weight	~15000 kg
----	-------------	-----------

Load chart



General drawing

